

T200 Synchronous Clock Movements

For exterior dials
up to 1,370mm diameter
and interior dials
up to 1,830mm diameter

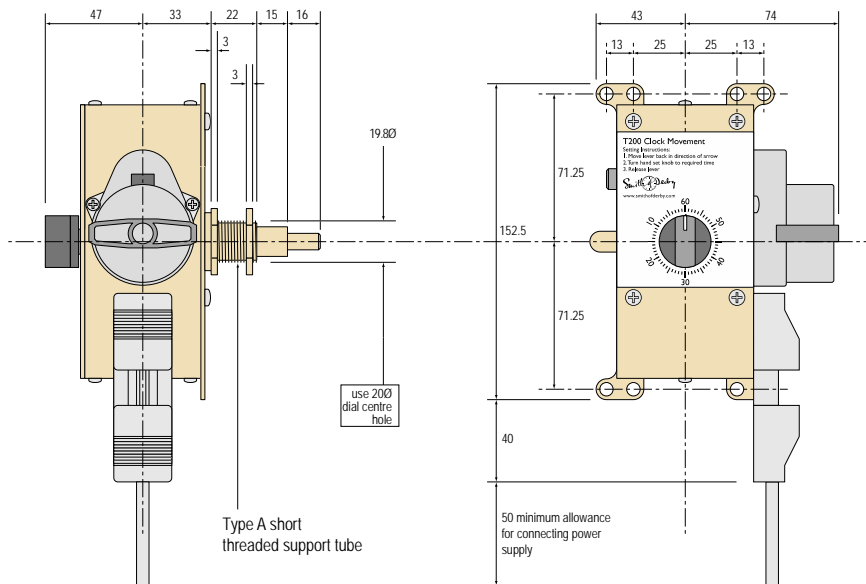
Document ref: T200 Data

Issue date: 01 May 2018



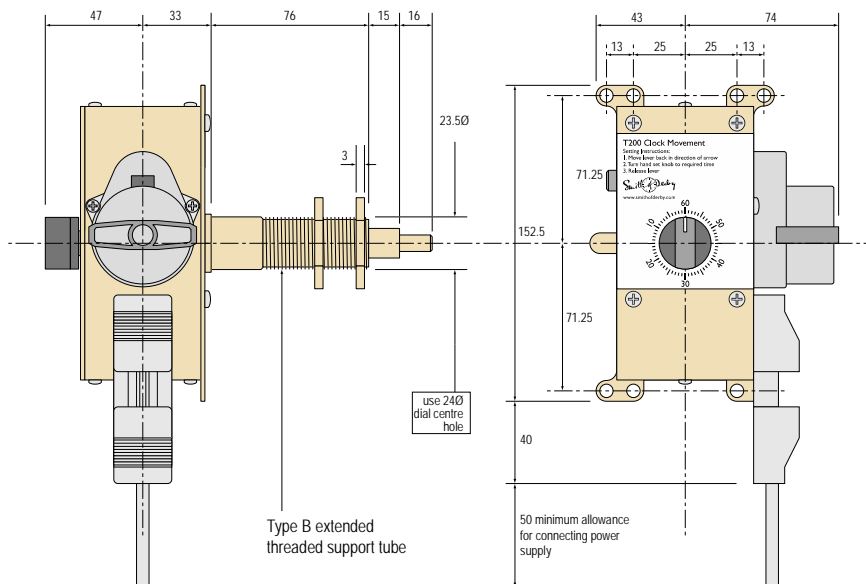
- Accurate timekeeping controlled by mains frequency.
- Reliably drives large weather exposed exterior hands.
- Mounting and drive shaft length options for dial illumination and thickness.
- Easy time adjustment from back of dial.
- Automatic power failure backup and time correction options.
- Excellent build quality giving many years of service.
- UK designed and manufactured.

Dimensions

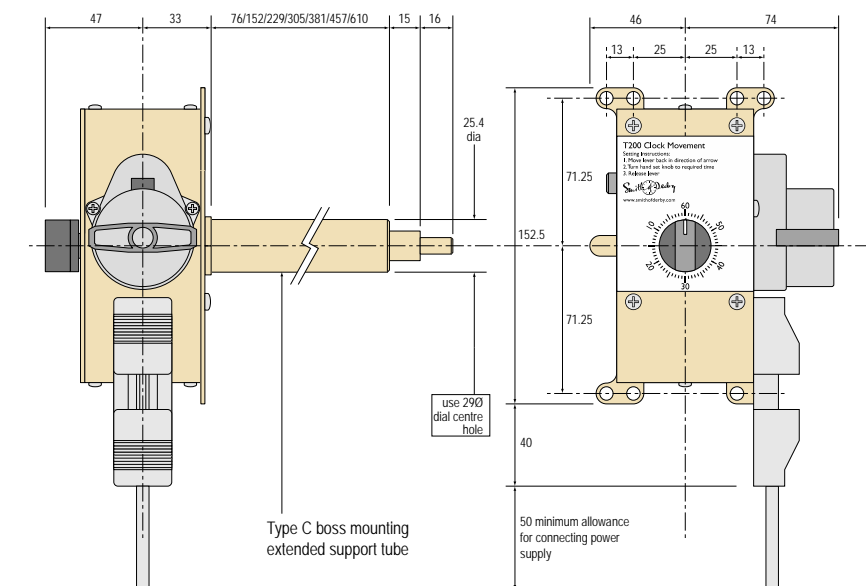


The dimension diagrams show the T200 movement with all drive shaft options.

Type A
Short threaded support tube for close coupled centre fixing to a dial or panel.



Type B
Extended threaded support tube for increased clearance centre fixing and minimise shadow from T200 on backlit dials.



Type C
Boss mounting support tube in a choice of lengths.

Installation requirements

Dial diameters

Maximum dial diameters refer to overall sweep of the tip of the hour hand. Outdoor dial without dial cover: 1,370mm diameter: interior or with a cover glass over outdoor dial: 1,830mm diameter.

Location and access

Although it will drive external hands, the T200 unit itself must be weather protected.

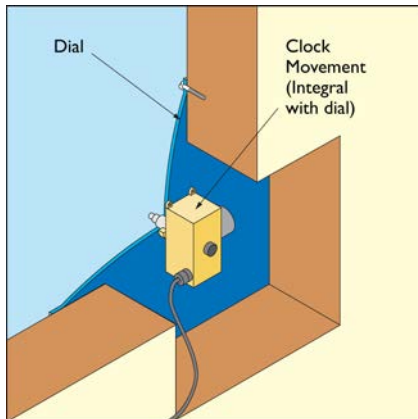
Adequate clearances must be provided if the T200 is to be installed in its own housing or casing behind the clock dial.

The T200 must be installed where access is possible for maintenance. If rear access is not possible, it will be necessary to remove the clock dial, hands and movement assembly from the outside.

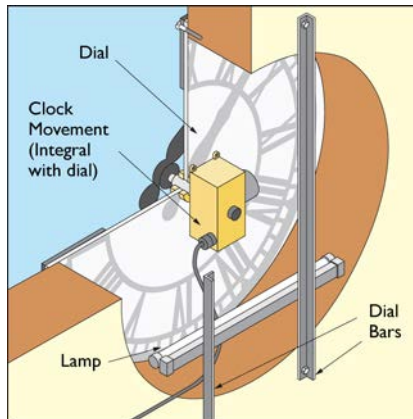
Time adjustment may be done from the back of the movement. If access is not convenient, it must be driven via a Smith of Derby Auto Restart or Inverter Charger back-up system.

Installation methods

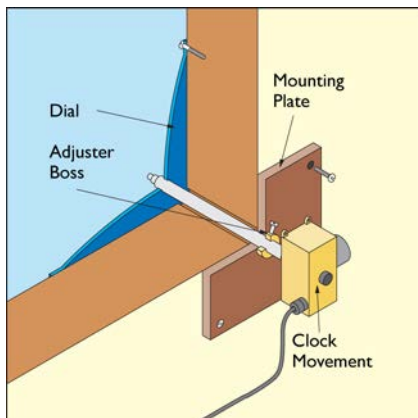
The T200 may be centre fixed on the rear of the dial, or on a mounting plate with adjuster boss to accommodate wall thickness or backlighting.



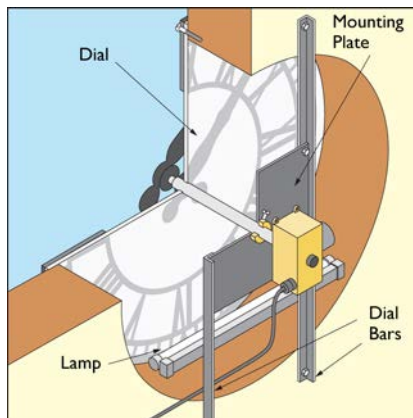
Type A support tube, rear of dial.



Type B support tube, backlit dial.



Type C support tube, solid wall.



Type C support tube, backlit dial.

Safety requirements

The T200 movement must only be installed and maintained by qualified persons and in accordance with all electrical regulations. No attempt must be made to dismantle, modify or repair the unit other than the procedures given in the operation and maintenance manual. Failure to comply may be dangerous and will automatically invalidate any warranty.

Power failure backup systems

We recommend driving the T200 through our power failure back-up system (SA15/8 Auto Restart or SA19/1 Permanent Inverter Charger). These units include self-correction of timekeeping after power failures and automatic summer/winter changeover, and will control up to four individual synchronous movements (one per clock dial).

Electrical requirements

A power outlet to the correct specification must be provided by the client prior to installation of the T200 movement and backup system.

Any fixed cabling required between the backup system and the T200 movement must also be provided.

To comply with regulations both the above must be installed by an approved electrical contractor.

The plug/socket fitted to the T200 provides a safe and convenient way of isolating it from the power supply for maintenance. If the size of the plug/socket is a problem in a limited space, an alternative connector may be used but it is essential that the motor connection wires are held securely.

All wiring and connections must comply with local electrical regulations (BS7671 in the United Kingdom).

Maintenance

Smith of Derby offer a maintenance programme which includes one annual service visit within the UK mainland, and includes certain replacement or exchange parts and maintenance within the terms of the agreement. Please contact us for further details.

Guarantee

12 months warranty against failure through faulty workmanship or materials. Please see our full terms and conditions, available on our website or on request.

Specification

Timekeeping accuracy	via backup system	+/- 2 sec/year
	direct from mains	better than +/- 0.1 seconds over a 24 hour period (UK supply)
Weight (nominal excluding hands)		1.8kg
Power requirements	standard	200-240V 50Hz AC
	special order	100-120V 50/60Hz AC
	fuse rating	5A
	power consumption	3w
Operating temperature range		-15 to +55 degrees Celsius
Maximum dial diameters	exterior	1,370mm
	interior/protected	1,830mm
Maximum dial/combined dial and wall thickness	type A support tube	14mm solid/opaque
	type B support tube	40mm solid/opaque, 6mm translucent/backlit
	type C support tube	550mm solid/opaque
Minimum space between dial and cover		46mm
Materials		corrosion resistant plated steel casing pre-lubricated long life bearings precision machined brass gear wheels bronze bearings