

# WHEREVER YOUR CLOCK IS, WE'LL PROVIDE THE TICK . . .

## CLOCK SERVICING

how we keep your clock in tick tock order:

- ✓ A pre-planned annual visit
- ✓ Health/safety/access inspection
- ✓ Electrical equipment & wiring checked
- ✓ Mechanism, transmission & dials checked
- ✓ Hammer connecting wires checked
- ✓ Weight lines checked
- ✓ Automatic winding/timekeeping checked
- ✓ Control equipment checked
- ✓ Condition report provided
- ✓ 300 years of specialist experience
- ✓ Full UK coverage with local engineers
- ✓ Fully insured for personal, public and product liability
- ✓ CRB checked personnel

We service over 4,500 landmark clocks every year . . . .

## SERVICE

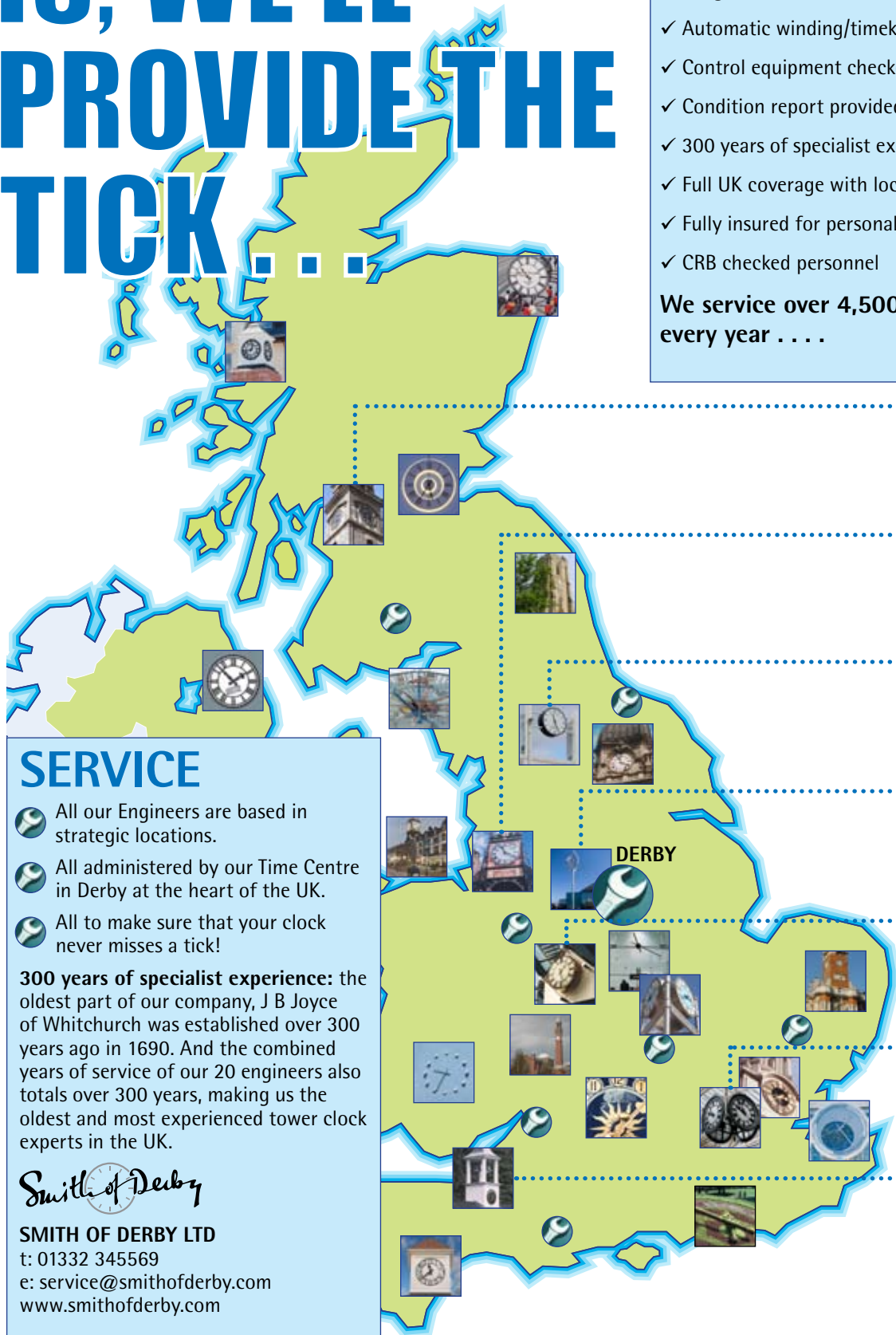
- 🌐 All our Engineers are based in strategic locations.
- 🌐 All administered by our Time Centre in Derby at the heart of the UK.
- 🌐 All to make sure that your clock never misses a tick!

**300 years of specialist experience:** the oldest part of our company, J B Joyce of Whitchurch was established over 300 years ago in 1690. And the combined years of service of our 20 engineers also totals over 300 years, making us the oldest and most experienced tower clock experts in the UK.

*Smith of Derby*

**SMITH OF DERBY LTD**  
t: 01332 345569  
e: service@smithofderby.com  
www.smithofderby.com

- ✓ **CHURCH**  
Parish Churches  
Cathedrals  
Village Halls
- ✓ **TOWN AND CITY**  
Historic Monuments  
Town Halls  
Squares and Promenades
- ✓ **LEISURE**  
Hotels  
Sports Stadiums  
Golf Clubs
- ✓ **COMMUNITY**  
Hospitals  
Schools and Universities  
Libraries and Museums
- ✓ **BUSINESS**  
Shopping Malls  
Shops and Supermarkets  
Corporate Offices
- ✓ **TRANSPORT**  
Bus and Rail Stations  
Airports  
Docks and Ports
- ✓ **RESIDENTIAL**  
Country Houses  
Private Residences  
Stables and Garages





## NATIONAL COVERAGE

Each year our team of field engineers keeps over 4,500 of the nation's clocks in working order. Regular attention and maintenance ensures the ageing process of time does not affect your time-teller, and a working clock enhances the wellbeing of your community.

## RESTORING, CONSERVING

Movements, dials, hands, windvanes: from on-site repair to full factory based restoration, we conserve your clock's heritage. Working in conjunction with advisers, and meeting all safety requirements, your clock is returned to its original resplendence.

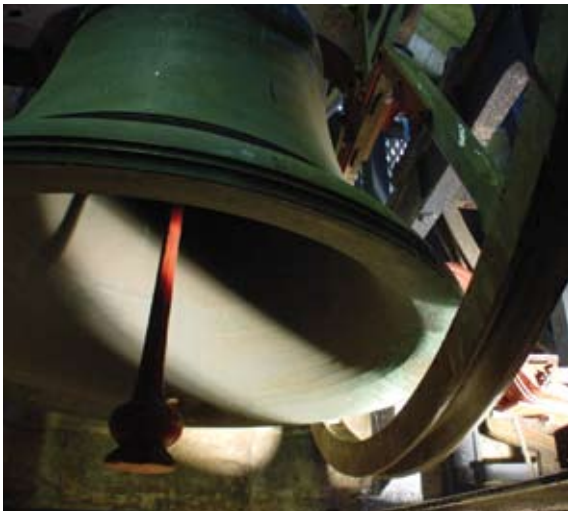
## MOVEMENTS & CONTROL

Many of the world's time landmarks are reliable and accurate because they use Smith of Derby patented movements. Electronic control systems provide power back-up, and automatic seasonal time adjustments are available for your clock. These systems may also be retro fitted to existing clocks.



## AUTOWINDING, TIMEKEEPING

Keeping your clock alive and second-accurate. Our conservation-based inventive engineering keeps your heritage in working order for future generations. Enhancements and upgrades ensure mechanical dependability and the preservation of historical integrity.



## BELLS & CHIMES

Bells are a time reference which pre-date the clock by many centuries. This sense of time-telling continues for you today, through precision controlled hammer operation for bell chime, strike and night silencing.

## RECREATING BELL SOUND

Our Electronic Bell Sound System reproduces every subtle harmonic and resonance of the original. Up to 15 bell notes enable this modern day carillon to play set change-ringing, wedding peals, hymns and tunes.

## CCTV & FIRE DETECTION

ChurchCAM provides an affordable solution to protect your church, with fire detection, CCTV monitoring, auto motion detection/recording, text alerts and servicing. You may also be entitled to a discount on your annual clock maintenance, so now might be a good time to consider Smith of Derby as provider of your time and security needs. Options include wireless installation and lease packages



SMITH OF DERBY LTD  
112 Alfreton Road, Derby DE21 4AU  
t: 01332 345569  
e: [enquiries@smithofderby.com](mailto:enquiries@smithofderby.com)  
[www.smithofderby.com](http://www.smithofderby.com)

*Smith of Derby*  
300 years of clockmaking expertise